

Dapter S3

1219 x 1219

CPP 630c



Nestable pallet in imperial units 48" x 48" with closed deck

The nestable Dapter S3 is distinctive for its square surface and especially low height. Its large feet allow block stacking. Additional individual inserts on the upper deck allow for secure transport of barrels and similar items.

Bottom support

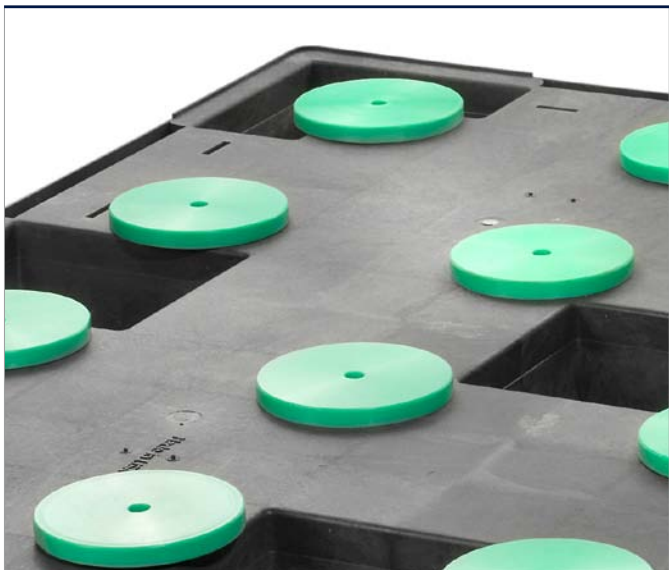
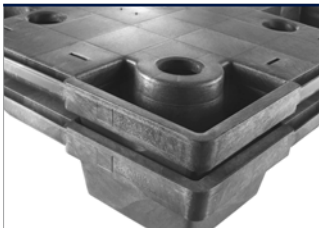


> 9 feet (9F)

Deck options



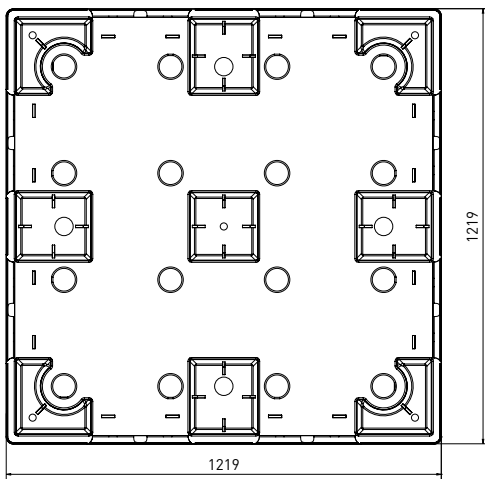
> closed deck (CD)



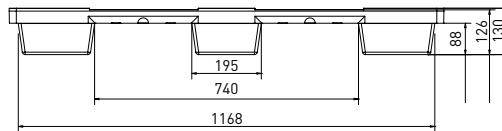
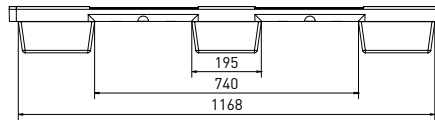
Technical data*1

	Previous name	Bottom support	Top deck	Dimensions [mm]	Load capacities*2 [kg]			Weight [kg]	
					Static	Dynamic	Racking	PP	PO
Dapter S3 (CD-6R)	CPP 630c	9 feet, nestable	closed	1219 x 1219 x 126	4000	1200	—	12,5	14,5

Entry: 4 ways | Nesting height: – | Safety rim: 16 mm



nominal sizes in mm



Options

- Color: [other colors on request*3] > Individual marking*3
- Anti-slip: safety rim, customized inserts to secure loads
- ESD prevention: –



*1 Figures can vary depending on the raw material used and options applied. *2 Guideline values are based both on experience and parts of test ISO 8611, which tests with evenly distributed loads at room temperature (20°C). Varying data may result from different conditions of usage. Your specific requirements can be identified upon request. *3 Minimum quantity required - PO pallets should only be used and stored in a dry environment. We reserve the right to change any of the stated information without prior notice.